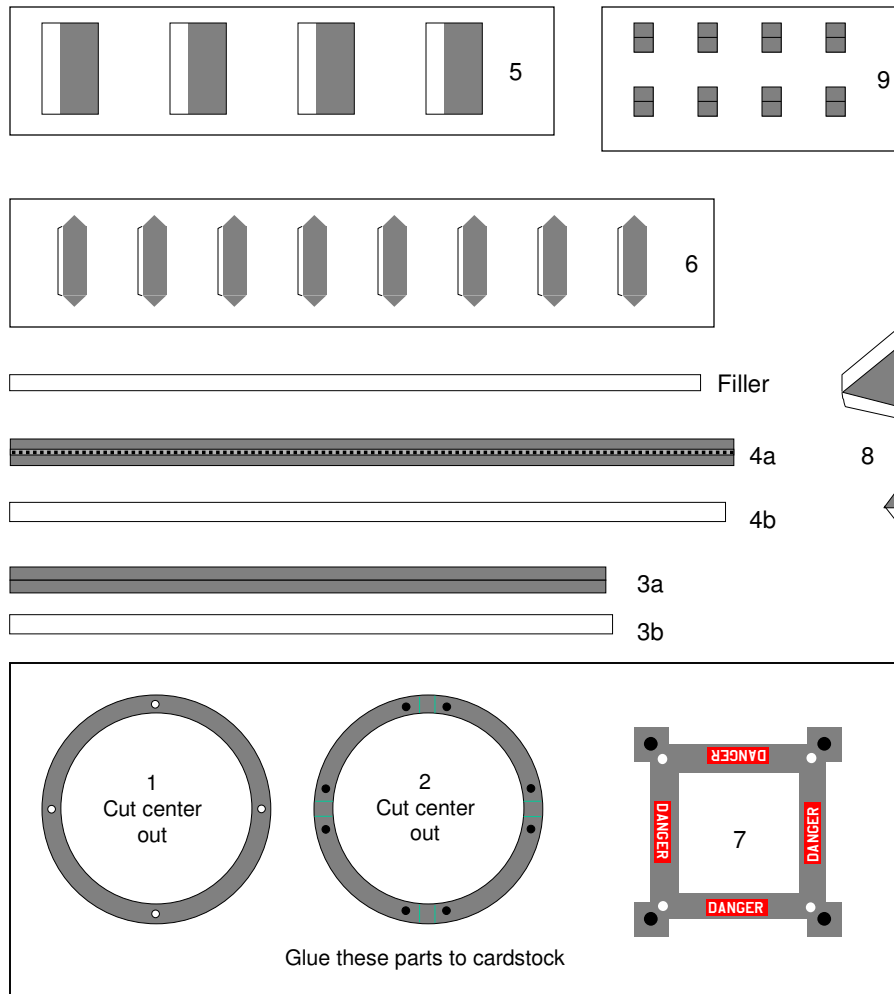


Mercury-Redstone Launch Stand and Escape Tower

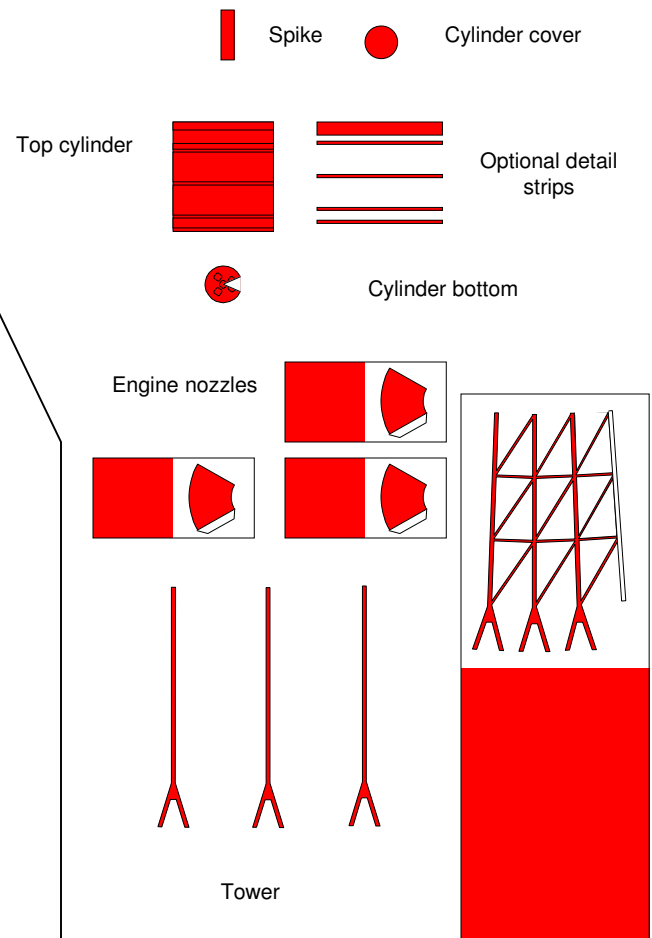
Add-on parts for Erik te Groen's Mercury-Redstone Rocket.

1/96 Scale

Launch Stand



Escape Tower



Note: Fold over and glue the nozzles and tower on to the red sections to make both sides red.

Optional: Print this page on red cardstock and build the tower with these parts.

